



pextra+ serrated key system

Extra protection
for your key system

Secure
Flexible
Durable



Do you want enhanced security?

Configure pextra+ according to your requirements

The tried-and-tested dormakaba pextra+ serrated key system provides multi-layer protection for high-security master key systems. Its versatility makes it ideal for securing and organising access to any building – not only family homes and residential complexes, but also public buildings and industrial properties.

Areas of application

- Healthcare
- Office buildings
- Hotels & catering
- Airports
- Banking & insurance
- Education
- Industry & production
- Retail sector
- Privately owned housing
- Government & administration
- Sport & culture
- Transport & logistics

Your advantages at a glance

- Long-term protection by European patent EP2686510*
- High level of security as it complies with relevant standards, such as EN 1303 and DIN 18252.
- 5-pin certification in accordance with VdSA and VdSAZ; 6-pin certification in accordance with VDSB and VdsbZ
- Standard protection against forcible opening
- Resistance Grade C has already been achieved in the standard version
- Protection against impressioning thanks to the overlapping key profile and undercut profile groove (double branch groove)
- Picking resistance and protection against drilling provided by additional steel security elements in the lock cylinder
- Optional security elements and special functions for even higher levels of protection
- Flexible in its use with serial keying and with basic to highly complex master key system types
- Can be combined with electronic systems from dormakaba

*Not valid in all countries – see worldwide.espacenet.com for details

An unbeatable combination: Serrated key and lock cylinder

Simple overlapping key profile
provides increased protection
against picking

Robust nickel silver
for long product life

Undercut profile groove (double branch
groove) with optional profile blocking
pin offers protection against illegal key
copies

Side locking elements offer enhanced
security in the standard version

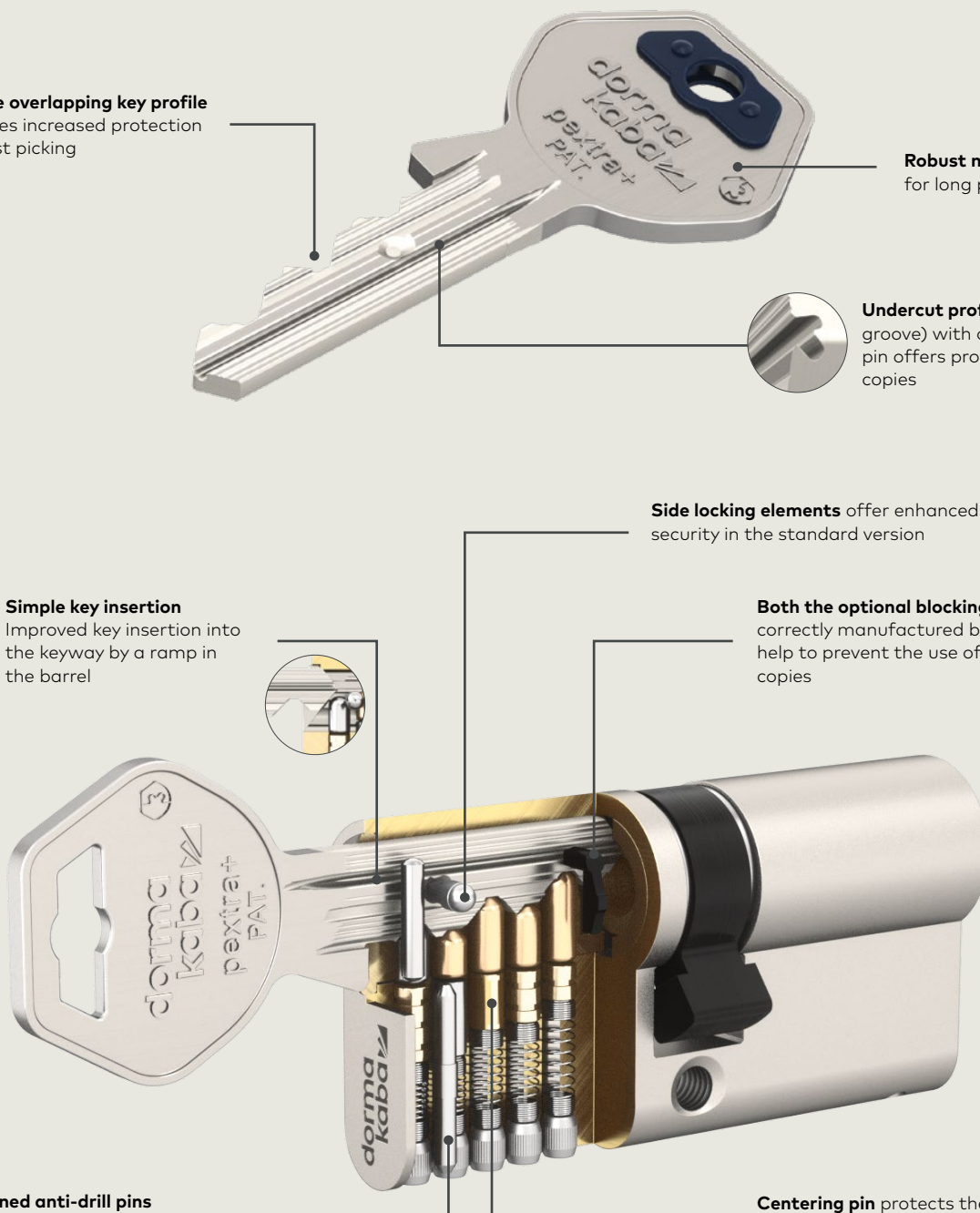
Simple key insertion
Improved key insertion into
the keyway by a ramp in
the barrel

Both the optional blocking pin and the
correctly manufactured branch groove
help to prevent the use of illegal key
copies

Hardened anti-drill pins
for increased drilling
protection in the standard
version

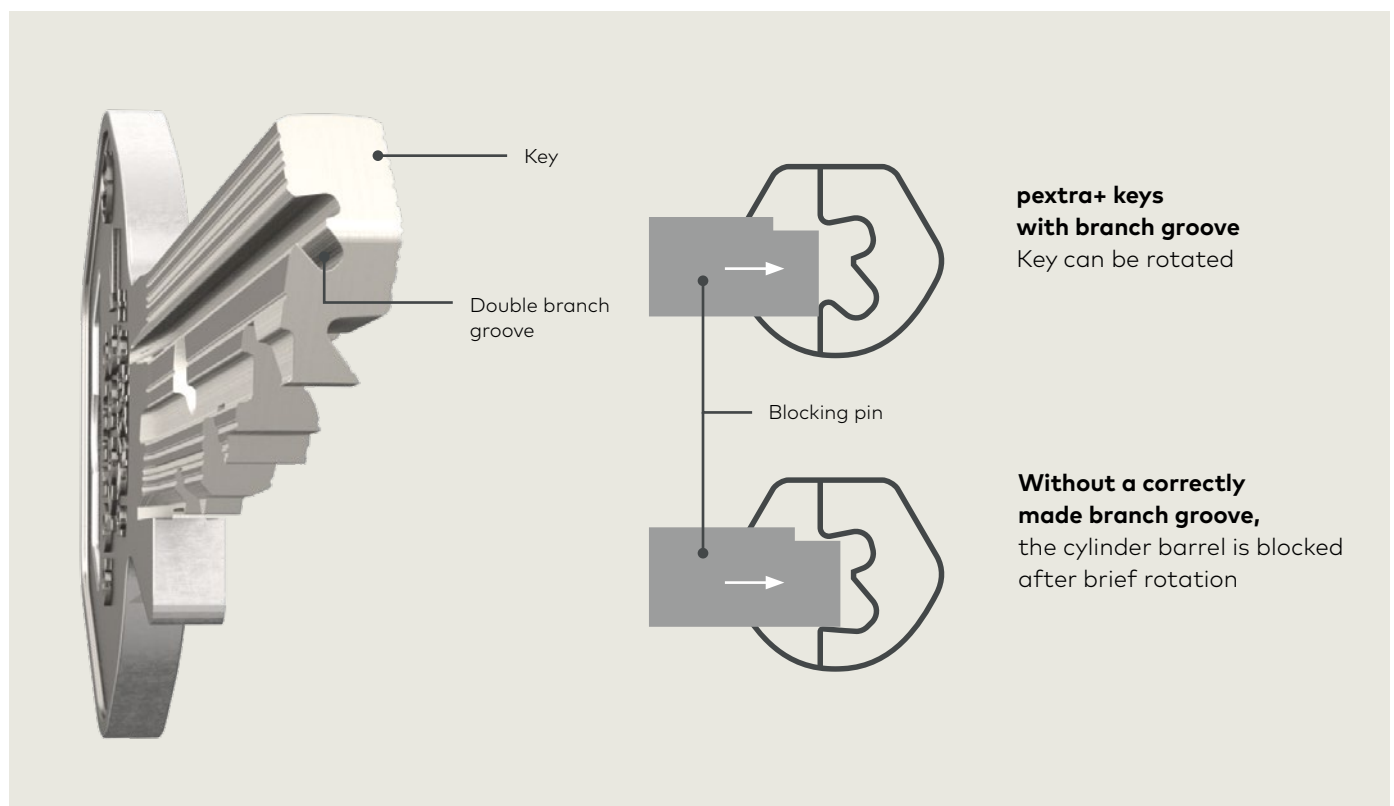
Centering pin protects the cylinder
against bumping

NEW



The patented double branch groove for increased protection against illegal copying

pextra+ keys are designed with an undercut profile groove. This so-called double branch groove can only be produced by special machines and a complex milling process. Optional blocking pins in the lock cylinder check whether the branch groove is present and block the cylinder barrel in the case of illegal copies.



Multi-layer protection as standard

- Vertical pin pairs and horizontal locking elements check the robust nickel silver key and allow the barrel to turn when the shear line is reached.
- The patented centering pin protects the lock cylinder against the bumping method.
- The overlapping key profile and special tumbler pins provide protection against picking the door open.
- Hardened steel elements in the barrel and in the housing make it difficult to drill or pull the lock cylinder out of the door lock.

Even more security available, if desired

- You can choose a lock cylinder with five, six or seven tumbler pins – for even greater protection against impressing.
- Optional steel security elements protect the lock cylinder.
- Optional sacrificial cut: In the event of attempted manipulation by pulling the lock cylinder, it breaks off at a pre-defined point, and cannot be opened with conventional tools, like a screwdriver. It can still be opened with the corresponding key in an emergency.
- Additional options such as cylinder covers

A new level of security.

You can rely on that.

Patent protection

dormakaba pextra+ is protected by patent EP 2686510*
– valid until 2032

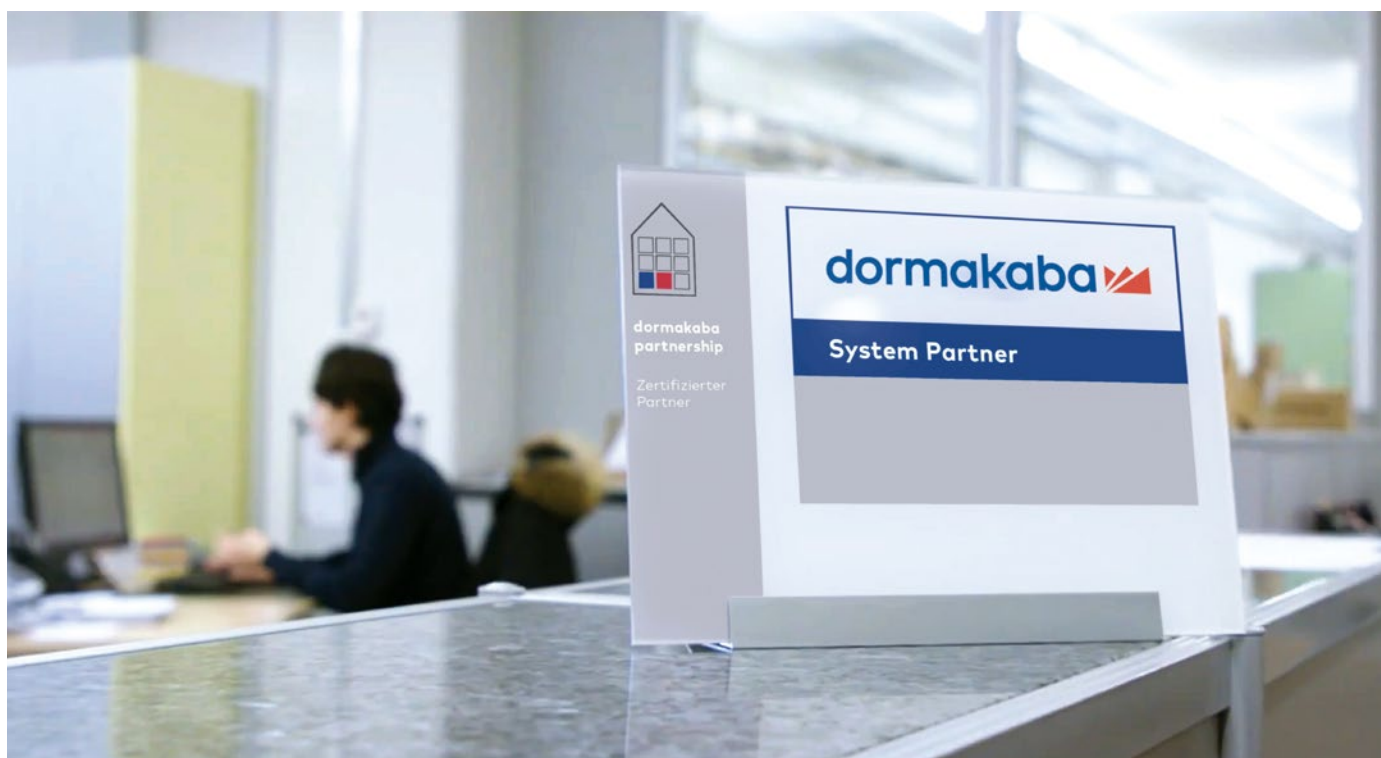
Brand protection

Our systems are additionally marked with a logo that is protected as a figurative mark and that makes them easy to identify. The figurative mark symbolises that the key is an original manufactured by dormakaba. Duplicate keys are only produced by authorized dormakaba dealers or dormakaba itself.

*Not valid in all countries – see worldwide.espacenet.com for details

Security Card

Every new pextra+ master key system and every serial cylinder is supplied with a security card containing all the security information about the system. This is used to manage the master key system data and to identify the owner when ordering key copies. pextra+ is also available as a partner system, i.e. duplicate keys can be obtained from certified dormakaba sales partners.



Standards and certificates

- Complies with EN 1303/DIN 18252 standards Key related security Grade 5 for cylinders with five pins and Grade 6 for cylinders with five pins + optional profile blocking pin and for cylinders with six or seven pins
- Complies with EN 1303/DIN 18252 standards Attack Resistance Grade D with corresponding door furniture, with steel shim reinforcement in the housing or with a sacrificial cut (SBS)
- Certificates according to VdSA and VdSAZ with five pins; VdSB and VdSBZ with six pins
- Fire protection as standard; fire resistant (T90) according to standard EN 1634



You design your master key system. All options are available to you

pextra+ can be used with all serial keying and master key system types – from the one-key-for-all solution for home use, to large, complex systems with different access authorizations. The basis is a key plan, according to which selected keys can open a series of specific doors.

To design the key plan, we examine and evaluate our customers' requirements in detail. This means that you will have better control, save costs incurred by duplicate keys and reduce the total number of keys.

Different applications require different solutions



Private homes



Residential complexes



Office buildings or company sites



Large and complex facilities or public facilities, such as universities or schools

Types of master key systems.

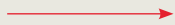
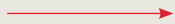
Applications and principles

Master key systems

Application: e.g. in office buildings or schools.

There are individual keyings, but also one or more parent keys (master keys), which lock all cylinders within the system.

Individual keys (ES):
only close specific doors



Lock cylinders or doors



Administration



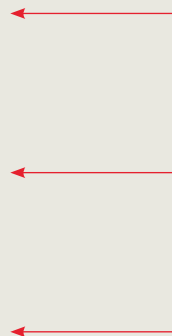
Sales



IT



Master key (HS):
closes all doors

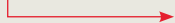
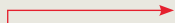


Grand master key systems

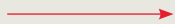
Application: e.g. in large office buildings or universities.

Here, the functions of a master key system are expanded by the grand master key, additional main group keys and group keys.

Group keys (GS):
close a specific
area



Individual keys (ES):
only close specific
doors



Lock cylinders or doors



Sales 1



Sales 2



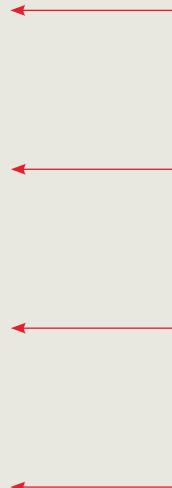
IT



Accounting



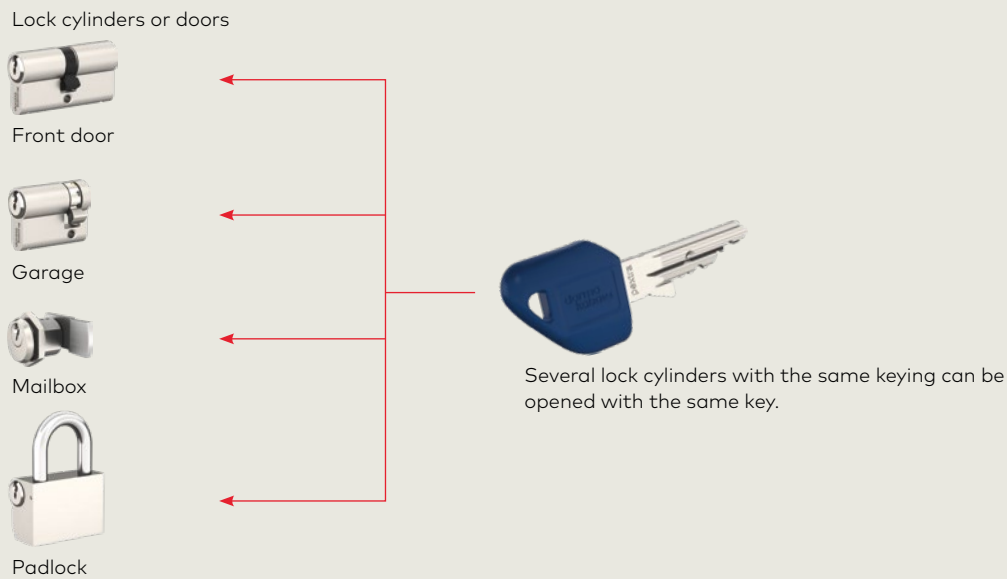
Grand master key (GHS):
closes all doors



Keyed-alike serial lock cylinders

Application: e.g. for family homes.

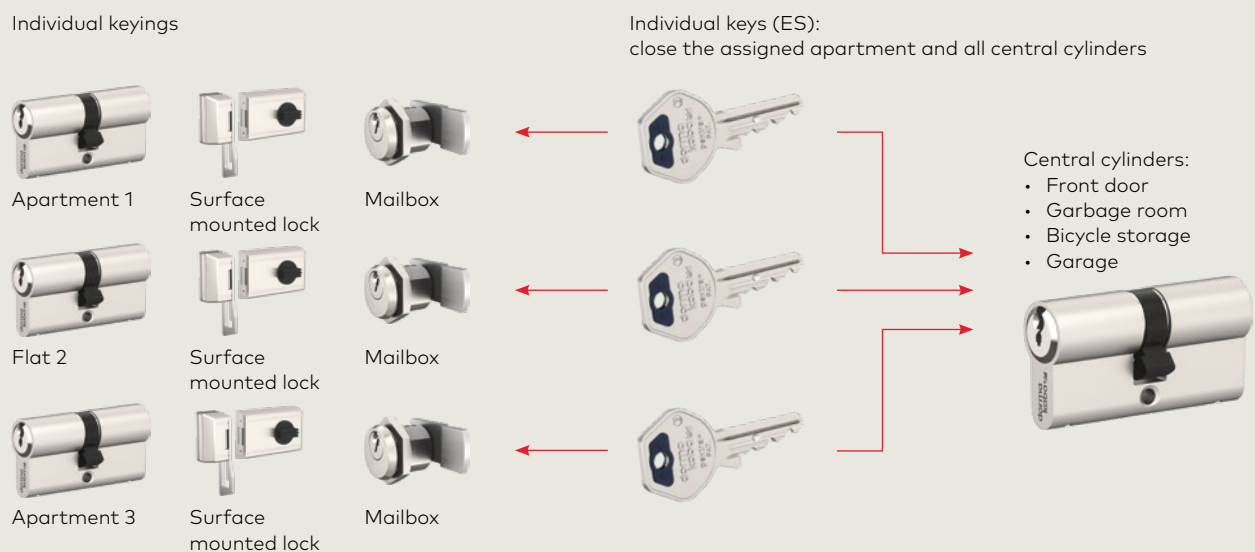
All or selected lock cylinders can be locked with the same key. This simplifies handling and reduces the size of the key ring.



Central master key systems

Application: e.g. in residential complexes

Several different individual keys can close central lock cylinders. In addition, there are individual keyings, which can each only be closed by one key.



With the special **administrator master key system**, the main areas of several properties (i.e. several locking systems) in different locations can be closed with only one key (administrator key).

Key variety.

More clarity through colour

Select the shape and function of the key



Standard key with cornered key bow, side locking element and optional mini clip



TrendKey with coloured clip for ergonomic opening



Metal clip key for ease of use with multipoint locks or security rosettes



Key with RFID transponder clip for integration into electronic access control systems

Colours as a visual aid



For the **standard key**, there are 11 colours for large clips and 5 colours for mini clips.



The **TrendKey** is available in dark blue, light blue, red, green, yellow and black.



The **metal clip key** is supplied as standard without a coloured ball. Red, green and black balls are nevertheless available as visual aids.



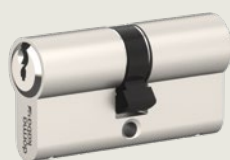
The **RFID transponder clips** have six coloured ring elements for easier identification.

Free choice of lock cylinders

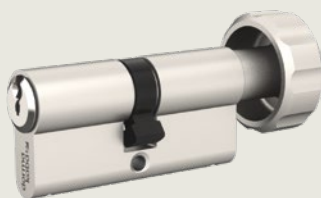
The cylinder programme offers a wide selection of cylinder types. You can also integrate cylinders for cabinet locks, key-operated switches or lift controls into the

system. Choose between nine surface finishes to harmonise your design.

Sample cylinder lock types



DZ



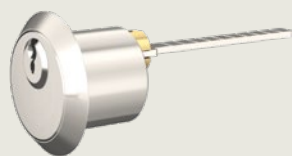
DKZ



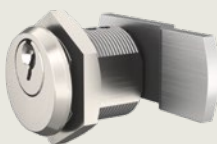
HZ



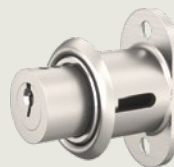
VHZ



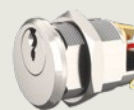
AZ



BMZ



MZ



SZ

- DZ Double cylinder
- DKZ Thumbturn cylinder
- HZ Single cylinder

- VHZ Padlock
- AZ Rim cylinder
- BMZ Camlock cylinder

- MZ Furniture lock
- SZ Key switch cylinder

Finishes



NI



MS



CRM



CRP



CRS



MP



MB



BM



BD

- NI Nickel ¹⁾
- MS Natural brass ¹⁾
- CRM Dull chrome

- CRP Polished chrome
- CRS Satin chrome
- MP Polished brass

- MB Brushed dull brass
- BM Medium brown
- BD Dark brown

Cylinder surfaces (not colour-reproducible)

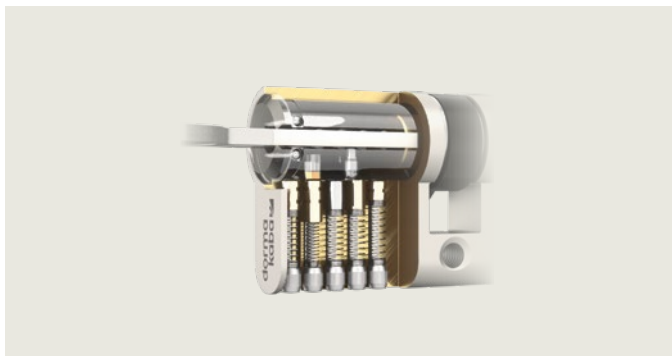
1) Standard surface

Added value for your master key system.

Useful special functions

Depending on your requirements, you can supplement your individual solution with one of our numerous special functions. These offer added value in terms of functionality and benefits. For details, please refer to the brochure **"Special functions for serrated key systems."**

Self-changeable cylinder (SUZ):



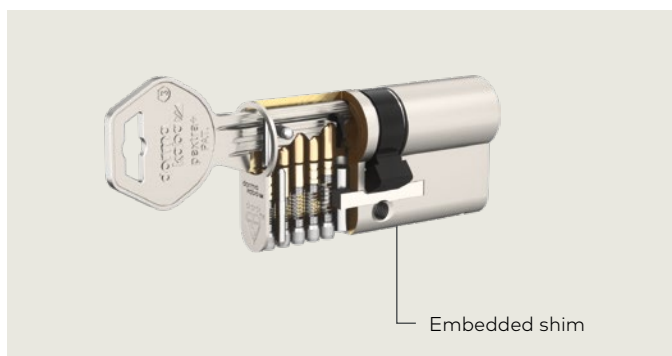
Need to change the keys? No cylinder replacement necessary. There are three generations of keys for the self-changeable lock cylinder. Using these keys, the lock cylinder keying can be changed up to two times – no additional tools required.

Double cylinder with key override (BSZ)



Key left in the lock? Not a problem! The double cylinder makes it possible to open the door from the opposite side with an authorized key when the key is inserted on one side and rotated in any direction.

Steel reinforcement shims version (LAM)



Attack from outside? Maximum resistance from inside. Hardened steel shims in the lock cylinder effectively reinforce the housing yoke and ensure significantly increased pulling protection, which complies with Attack Resistance Grade D according to EN 1303.

Dust and weather protection (SSW)



Lots of dust in the air? But not in the cylinder. Two pivoted, spring-mounted plastic shims on the front of the cylinder keep out dust and splash water. Their shape makes the key easy to insert.

Flexible and secure access.

Here, pextra+ is already in use



Secure, smart access to the Lower Austrian Chamber of Labour.

The building complex features a uniform master key system containing around 750 dormakaba pextra+ lock cylinders and provides tailor-made security. The combination of dormakaba door closers and automatic drives for revolving folding doors ensures barrier-free accessibility.

- Secure lock cylinders
- An open and barrier-free building
- Unobstructed, secure access to a public building



Secure and smart entry solution in the Congress Centre Alpbach.

Around 140 dormakaba pextra+ lock cylinders can be found in this system – in letter boxes, technology, warehouses and administration, as well as in seminar rooms. Thanks to the expansion possibilities and compatibility of dormakaba products, the master key system will be able to meet future requirements.

- Convenient access solution
- Dependable security
- Harmonious symbiosis of function and design



Uniform access solution in the Simone Veil hospital.

In the Simone Veil general hospital in France, almost 2,400 dormakaba pextra+ lock cylinders secure the doors at the two Eaubonne and Montmorency locations. The uniform master key system replaced the old lock cylinders that had been procured from different manufacturers, making access and administration much easier and more efficient.

- Lock cylinders allow many possible combinations.
- Patent and copy protection on the key
- System easily expandable

We make access in life smart and secure

Our Offering

Door Hardware
Entrance Systems
Electronic Access & Data
Interior Glass Systems
Mechanical Key Systems
Lodging Systems
Safe Locks
Key Systems
Movable Walls
Services



Consulting
Planning
Realization
Operation
Maintenance

Our Focused Industries



Financial
Industries



Airports



Offices



Healthcare



Utilities / Telecoms



Multi-Family-
Housing



Production
Facilities



Residential



Government



Rail



Education



Retail



Hospitality



Our Values

Customer first

We always focus what we do on the needs of our customers, partners and users.

Curiosity

We constantly scout for trends as the inspiration for future-focused solutions.

Performance

We go the extra mile to ensure customer satisfaction and set the bar high in terms of security, quality and reliability.

Courage

We are committed to continuously developing solutions that generate genuine added value for our customers and users.

Trust

Our core corporate value is at the heart of everything we do, so customers can rest assured that they are in good hands.

Our Company

More than

150

years of experience

130

countries

16,000

employees

ISO 9001
Certificate



More than

2,000

patents



Sustainability Report
GRI Standards



stock-listed at

SIX Swiss Exchange (DOKA)

We call it
trusted access



**Door
Hardware**



**Electronic
Access & Data**



**Mechanical
Key Systems**



Lodging Systems



**Entrance
Systems**



**Interior Glass
Systems**



Safe Locks



Service

dormakaba
International Holding AG
Hofwisenstrasse 24
CH-8153 Rümlang
T +41 44 818 90 11
info@dormakaba.com
www.dormakaba.com